

C-PACK

VAC 956

C-PACK

VAC 956



Technical data:

Performance:
max. 40 packages/min, depending on product and infeed system

Power supply:
400/230 Volt N/PE, 50/60 Hz, approx. 2.0 kW (other connections on request)

Machine weight:
approx. 900 kg

Package weights:
0.2 – 5,0 kg (depending on size of product)

Labelling:
Optional wineglas and clip2clip

Clipping strip:
thickness: 0.35 – 0.45 mm width : 5 mm

Required Net Material:
Woven or extruded

Inside net tube diameter:
available from 65 to 210 mm

Infeed height:
1660 mm

Standard equipment:

- Automatic Tube Change
- adjustable net length
- Touchscreen Display
- automatic Clip head lubrication
- fast unlock system of clip head
- inside illumination
- 40 mm K6 Clip head
- net transport by net transport rollers

Options:

- label transporting units
- infeed V-belt
- printers
- exit conveyors

C-PACK
Verpackungsmaschinen GmbH
Kleiner Moorweg 34
25436 Tornesch - Germany

Tel: +49-4122-51173
Fax: +49-4122-55647
e-mail: c-pack@c-pack.com
Internet: www.c-pack.com

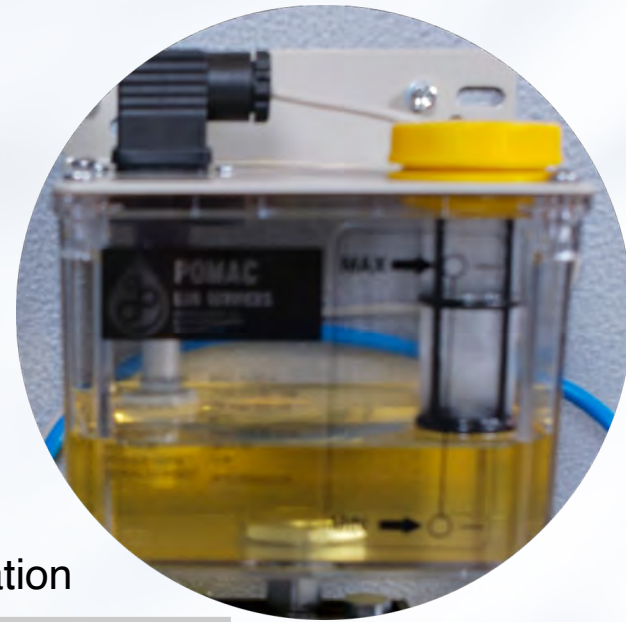
C-PACK
Verpackungsmaschinen GmbH
Kleiner Moorweg 34
25436 Tornesch - Germany

Tel: +49-4122-51173
Fax: +49-4122-55647
e-mail: c-pack@c-pack.com
Internet: www.c-pack.com



C-PACK

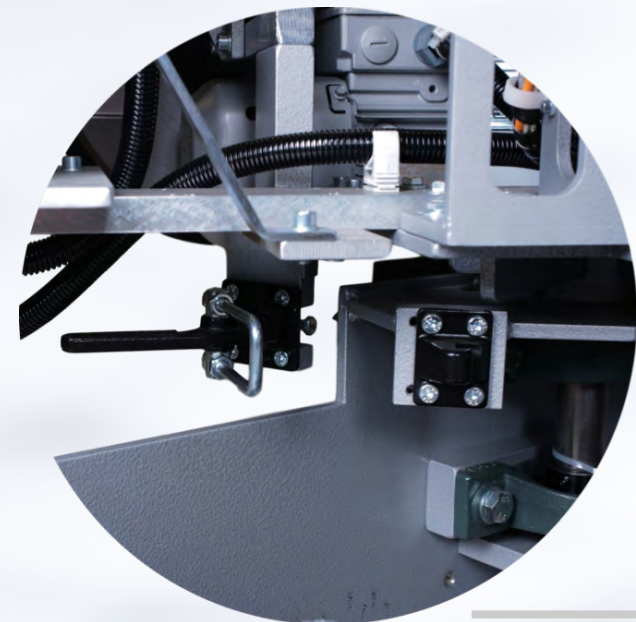
VAC 956



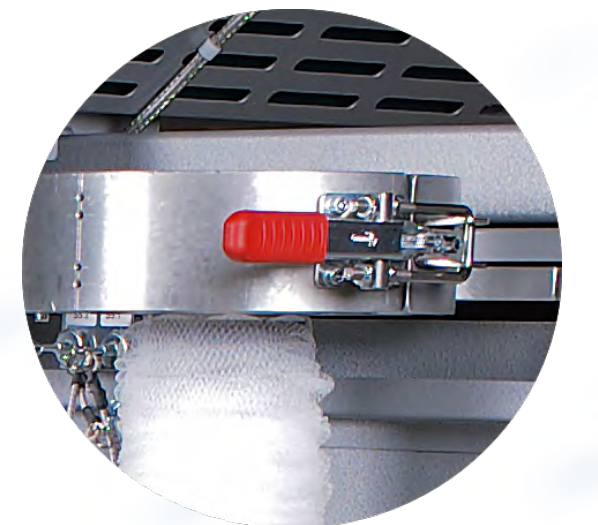
automatic lubrication



touchscreen



quick opening



stable locks

